

St. Joseph's Parking Facility

Rochester, NY



St. Joseph's Parking Facility

Rochester, NY

Owner:
CDIC
Hudson, NY
Phone: (518) 828-0681

Operator:
Sibgar Associates, L.P.
Rochester, NY

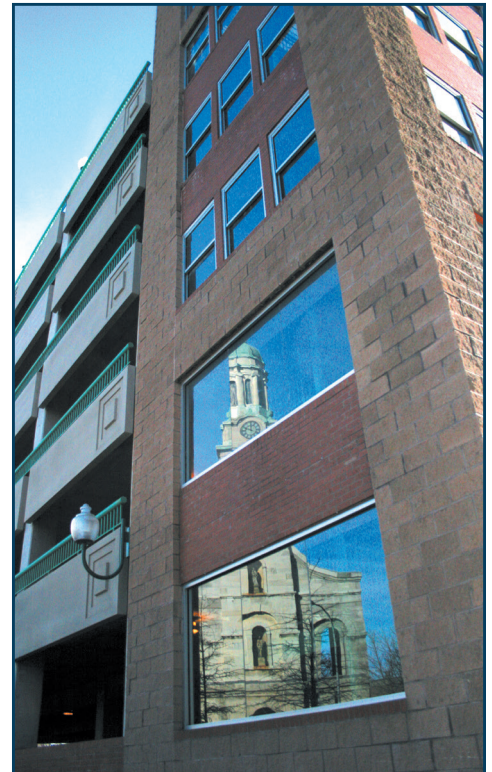
Site Engineer:
FRA Engineering, PC
Henrietta, NY
Phone: (585) 359-0280
www.fraengineering.com

Architect:
CMA Architecture, PC
Rochester, NY
(585) 454-6377

Project Value:
\$8.85M

Project Duration:
August 1998 - June 2000

Wilmorite's Role:
General Contractor



Project Highlights:

Pre-construction services for this project included extensive value engineering for the six-story, 1,000 car, poured-in-place concrete parking structure. These services were essential to bringing this project within the Guaranteed Maximum Price (GMP) that had been pre-negotiated with the owner. Throughout the value engineering and design/development process, Wilmorite had to work closely with the Landmark Society of Western New York and Rochester City Council to meet guidelines dictated by the project's location.

There was significant remediation of hazardous materials from the structures that occupied the site of the proposed garage. The demolition of existing buildings and the construction of the new garage on a tight downtown site required particular attention to public safety and right-of-way protection.

This project also included the construction of a bridge connection to the adjacent Sibley Tower building.

